



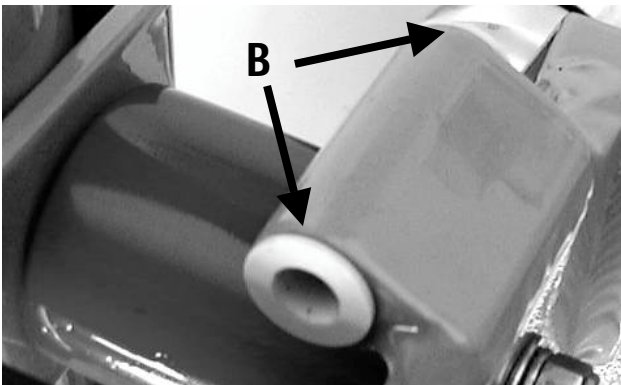
The Expedition-carrier is designed for loads up to 15 kg. The carrier is fixed at the mainframe and the rear swingarm. When the Birdy is folded, the carrier folds automatically. The carrier fits to all Birdys since year 2003 and to all Birdy grey.

### Scope of delivery

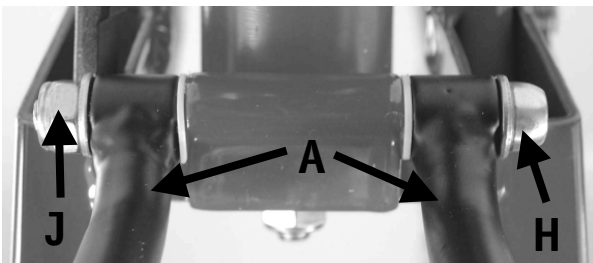
- 1 x carrier incl. carrier expander and reflector
- 2 x carrier stay (A), assembled
- 2 x bushings, brass (B)
- 1 x bolt DIN 912 M6x110, assembled
- 1 x bolt DIN 912 M6x65 (H)
- 1 x bolt DIN 912 M6x75 (I)
- 1 x lock nut M6 (J)
- 1 x lock cap nut M6 (K)
- 1 x Aheadset cap (L)
- 2 x washer M6 (M)
- 2 x spacer black, M6, thickness 5mm (O)

### Assembly at Birdys with Monocoque frame

As first step insert 2 bushings **B** at the rear swingarm.



Then fix both carrier stays **A** at the rear swingarm (see picture below, but without any washers). The nut **J** has to be additionally secured with a drop of threadlock adhesive.



The bolt only should be tightened until there is very little play. For optimum folding performance the stays must twist easily.

Turn the seatpost clamp before mounting the carrier at the Monocoque frame. The QR has to be in front of the seat tube. Otherwise the lever will touch the carrier.



Now mount the upper carrier stays at the frame. Push the bolt M6x75 **I** with a M6 washer through the right carrier stay. Place a black plastic spacer between right carrier stay and frame and push the bolt through the frame.

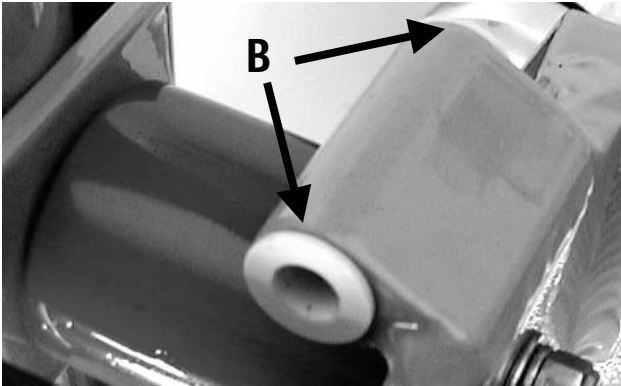
Place the second spacer between frame and left carrier stay and push the bolt through completely. Assembly a M6 washer and M6 cap nut.

Tighten the bolt and nut until play disappears.

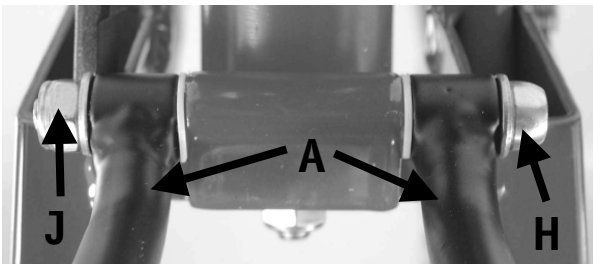


### Assembly at Birdys with segment clamp

As first step insert 2 bushings **B** at the rear swingarm.

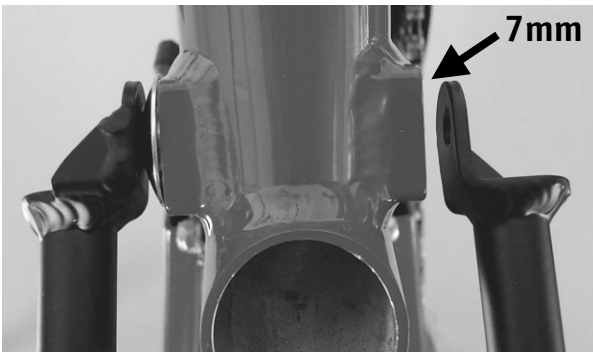


Then fix both carrier stays **A** at the rear swingarm (see picture below, but without any washers). The nut **J** has to be additionally secured with a drop of threadlock adhesive.



The bolt only should be tightened until there is very little play. For optimum folding performance the stays must twist easily.

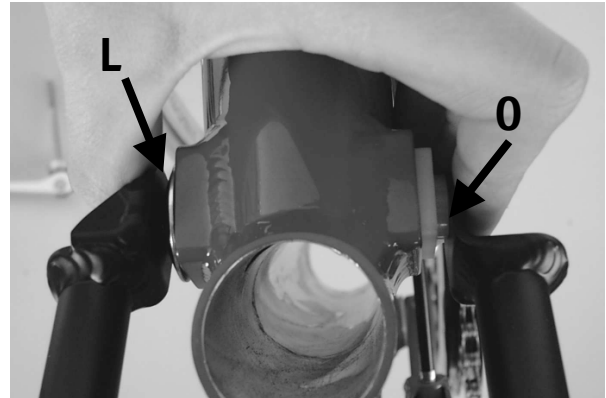
The position of the upper carrier stays has to be checked before assembly. The left stay should touch the Aheadset cap. The right stay should have a distance of 7mm to the segment tube (see arrow). Otherwise the carrier has to be realigned. With a distance smaller than 7mm the right stay will press the segment to inside and prevent slight movement of the seatpost during folding process.



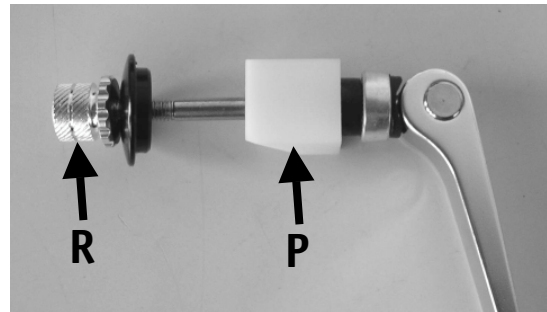
Now the carrier can be fixed at the segment clamp. For easy assembly please remove the seatpost.

Then insert the right segment part into the square tube of the mainframe. Please take care for correct orientation of segment. The left segment and the spacers are no longer needed but should be kept for future use.

Now the Aheadset cap **L** has to be placed at left and the spacer **O** at right side both hold by one hand. Now the upper carrier stays can be placed at the segment clamp and the quick release can be inserted.



Now insert the seat post and apply the lock nut **R** of the quick release. The order of assembly is shown again in the picture below.



### Adjustment of segment clamp

Turn the lock nut of the quick release until the seat post is fixed sufficiently but can still be moved easily after opening the quick release.



### How to use the segment clamp

It is not necessary to open the quick release for folding the rear swingarm.



After folding the rear swingarm please open the quick release and push down the seat post. Close quick release again.

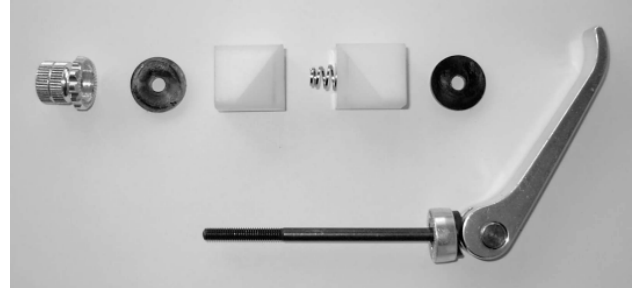


### How to maintain the segment clamp

It is not necessary to grease any part of the segment clamp. From time to time it is recommended to clean all parts with a dry lint-free cloth. After contamination with much dirt clean the surfaces with water and some detergent.

### How to dismantle the carrier

For use of the Birdy without any carrier the segment clamp has to re-built to its original stage incl. 2 segments, 2 spacers and without Aheadset cap (see picture below).



**! To customers:** All of the procedures we are about to describe require a certain degree of skill, suitable tools and mechanical attitude. The procedures should be carried out only by your dealer.

**! To dealers:** Always give this manual to your customer because it contains important information how to use the products.

